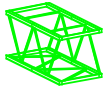


NOTES

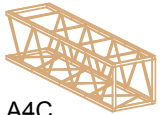
Assemble central tower first, then assemble wing sections.

Flat side of saddle bracket attaches to header frame. Secure it to the horizontal, about 5" from leg, with the long pin.

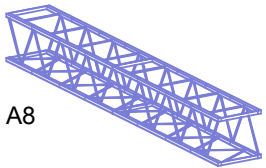
Box frame attaches between bracket and header frame



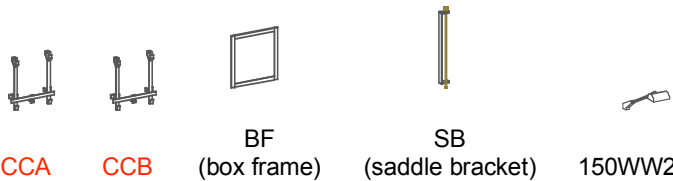
A2



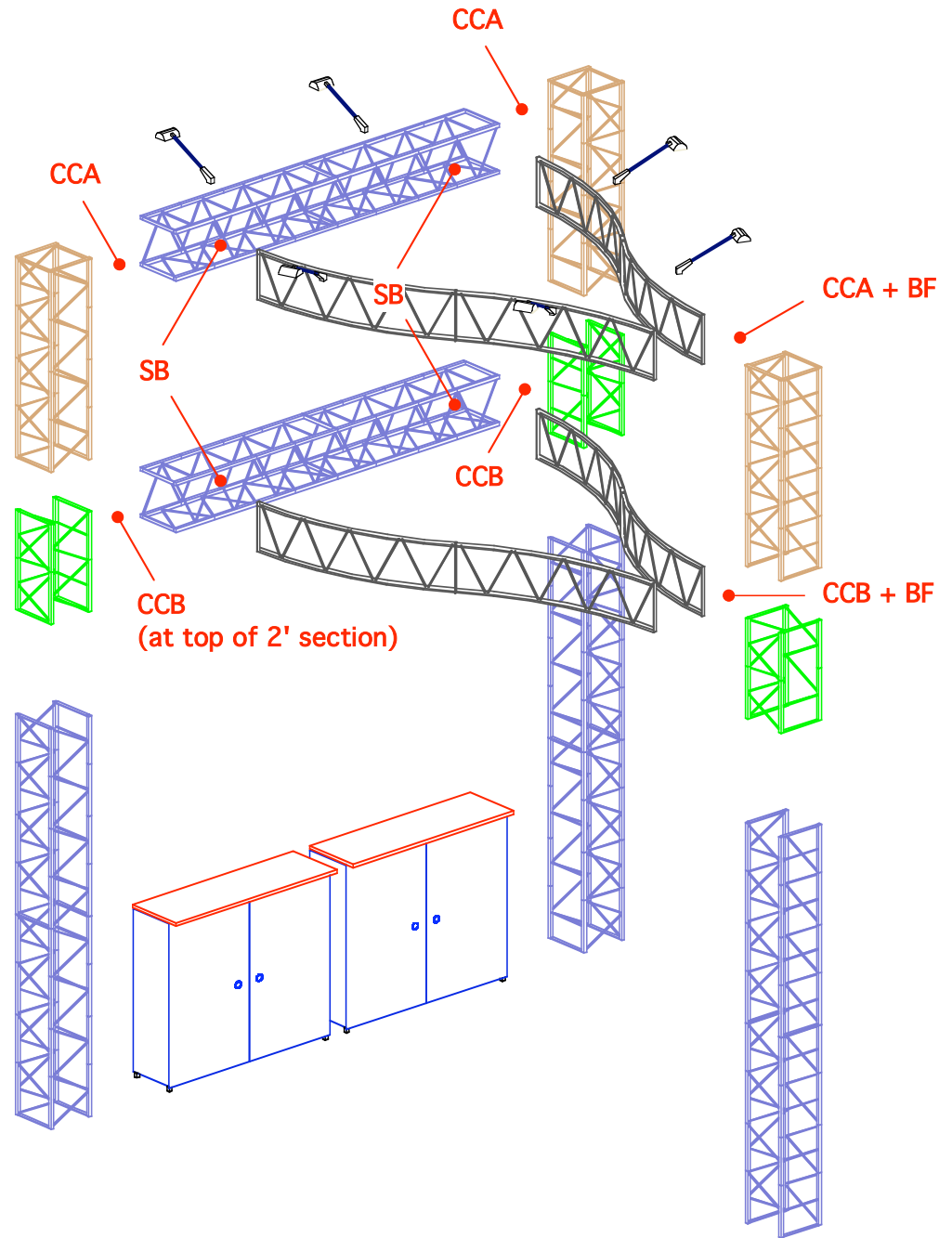
A4C



A8



CCA CCB BF (box frame) SB (saddle bracket) 150WW24



DRAWN BY: NG

